

GYMLeader

ahead of the game in sports equipment

***Outdoor
Basketball
Equipment***



Primary Basketball Tower Height Adjustable



This tower is designed for use at Primary and Intermediate level where the demand for a really heavy duty unit isn't as great.

The primary sized backboard is fitted on a Spida type frame with a 600mm overhang from the post and the backboard can be adjusted from regulation height to kiwi height.

All steel work is hot dip galvanised and the system includes a Heavy Duty Hoop (030/012).

Use with ground socket 060/038 if required

030/081 Primary Basketball Tower - Height Adjustable



Primary Freestanding Basketball Tower Height Adjustable



A slightly smaller freestanding counterweighted backstop with primary size backboard and heavy duty hoop.

Designed for use at primary and intermediate schools. Backboard projection is 600mm from the post and the base is fitted with wheels so the backstops can be moved.

All steelwork is hot dip galvanised.

030/080 Primary Freestanding Basketball Tower - Height Adjustable



Gymleader Intermediate Fixed Height Basketball Tower



The Gymleader Intermediate Basketball Tower has been designed as a cost effective alternative to the Heavy Duty Towers. This design makes them ideal for primary and intermediate schools.

These towers feature a hot dip galvanised 75 x 75 mm post with a 1.2m overhang to support the backboard at regulation height.

The backboard is supported by a 'Spida' style bracket which is fitted to the overhang of the RHS post.

The backboard is Primary size (1200 mm x 800 mm) and is manufactured from marine bonded ply which is fully painted and line marked complete with regulation size goal square.

The system is supplied with a regulation size Goliath Hoop.

The post can be permanently concreted into the ground or the optional ground sleeve can be used making the tower removable.

Ref: 030/070
060/038
060/039

Intermediate Outdoor Basketball Tower.
Ground Sleeve to suit Intermediate Tower.
Cover plate to fit ground sleeve when Intermediate Tower removed



Gymleader Intermediate Height Adjustable Basketball Tower



The Gymleader Intermediate Basketball Tower has been designed specifically to meet the needs of Primary and Intermediate Schools.

The design features a 75 x 75 mm post supplied in a hot dip galvanised finish.

The backboard is supported by a 'Spida' style bracket which is attached to an angled support bracket manufactured from 75 x 75 mm RHS steel. Both of these brackets are hot dip galvanised.

The angled support bracket gives a backboard overhang of 1200 mm and also allows the height of the backboard to be adjusted. The two most popular height settings are provided, Regulation and Kiwi height and the locating pin can be padlocked for additional security.

The backboard is Primary size (1200 mm x 800 mm) and is manufactured from marine bonded ply which is fully painted and line marked complete with regulation size goal square.

The system is supplied with a regulation size Goliath Hoop.

The post can be permanently concreted into the ground or the optional ground sleeve can be used making the tower removable.

Ref: 030/051	Height Adjustable Intermediate Basketball Tower.
060/038	Ground Sleeve to suit Intermediate Tower.
060/039	Cover plate to fit ground sleeve when Intermediate Tower removed



Gymleader Intermediate Height Adjustable Basketball Tower



The Gymleader Intermediate Basketball Tower has been designed specifically to meet the needs of Primary and Intermediate Schools.

Often there can be quite a difference in both the height of players and also their abilities at this age and so having basketball backboards at different heights can be a real bonus.

This tower is designed around a heavy duty main post and four cross arms supporting the backboard.

A lever on the back of the post is operated by standing on a footplate and removing the locking pin and this allows the backboard to be adjusted from 'Regulation' height down to 'Kiwi' height and then the locking pin replaced.

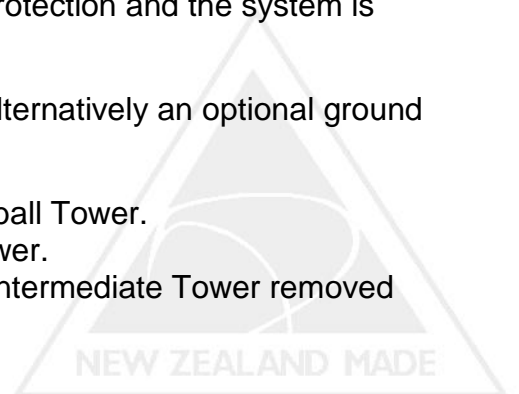
The mechanism is spring assisted to make the adjustment easily made by an adult and the locking pin can be padlocked for additional security.

The special basketball bracket supports a Primary Size (1200 x 800mm) marine bonded ply backboard which is fully painted and line marked complete with regulation goal square.

All steel work is hot dip galvanised for maximum corrosion protection and the system is supplied with a regulation size Goliath Hoop.

The post can be permanently concreted into the ground or alternatively an optional ground sleeve is available which will make the tower removable.

Ref: 030/076	Height Adjustable Intermediate Basketball Tower.
060/038	Ground Sleeve to suit Intermediate Tower.
060/039	Cover plate to fit ground sleeve when Intermediate Tower removed



Freestanding Basketball Unit



A freestanding, counterweighted, movable backstop designed primarily for use on multi purpose synthetic outdoor courts.

This backstops features:-

A Primary size backboard
(1200 x 800 mm)

Regulation size 'Goliath' Heavy Duty
Hoop.

Backboard overhang is 1200 mm.

Four heavy duty wheels - 2 castoring and
lockable for easy positioning.

All steel work is hot dip galvanised.

Counterweights are special concrete
blocks bolted in place.

Some assembly required.

Ref: 030/055

Freestanding Basketball Unit

N.B.

For use on Asphalt surfaces please discuss the requirements with us as the standard wheels will mark the court surface.



Freestanding Basketball Unit Height Adjustable



This is a freestanding, counterweighted, movable backstop with the added feature of being height adjustable.

It is ideally suited for use on multipurpose outdoor courts or for indoor courts where other backstops are not viable.

A lever on the back of the main post is operated by standing on a footplate and removing a locking pin which allows the backboard to be adjusted from 'Regulation' height to 'Kiwi' height and then replacing the locking pin.

The mechanism is spring assisted making the adjustment quite easy for an adult.

Additional Features:

- Primary size backboard (1200 x 800 mm).
- Full backboard support frame.
- Regulation size 'Goliath' Heavy Duty Hoop.
- Heavy Duty Steel construction fully hot dip galvanised for maximum corrosion protection.
- Powder coat finish available for indoor use units.
- Four Heavy Duty Wheels - 2 castoring and lockable for easy positioning.
- Special concrete counterweights bolted in place.
- Total counterweight nominally 250kg.
- Optional floor anchor bolts - recommended for heavy use areas
- Some assembly required.

Ref: 030/078 Freestanding Height Adjustable Basketball Unit.



Intermediate Reversible Tower



A fixed height tower similar to 030/070 but using a 76mm diameter post. A netball ring is fitted to the back of the post.

The unit comes complete with a special ground socket which allows the tower to be reversed for netball or basketball.

Ref: 030/075

Intermediate Reversible Basketball / Netball Tower



Freestanding Intermediate Reversible Tower

Similar to 030/055 being a fixed height unit but with the advantage of being able to rotate the post on the base to use the netball hoop fitted to the back of the post.

Ref: 030/077 Freestanding Intermediate Reversible Unit



Heavy Duty Basketball Tower



The design of the Gymleader heavy duty basketball tower has been proven with many years of service with councils, schools and even prisons around New Zealand and is backed by an Engineering Design Certificate

The design features a post fabricated from 100 x 100 SHS steel which supports a full steel frame for the backboard with an overhang of 1.2 metres.

Top stays maximise the durability of this unit and all steelwork is hot dipped galvanised for ultimate corrosion protection.

The backboard is International size and manufactured from marine bonded ply which is fully painted and finished with regulation line markings.

The system is supplied with your choice of either a Goliath bolt on hoop or a removable security hoop, or you may choose to pay a little extra and have a Competition Grade Sprung Hoop for more serious play.

The post can either be permanently concreted into the ground or the optional ground sleeve can be used which means the tower can be removed.

Ref: 030/011 Heavy Duty Outdoor Basketball Tower
 060/006 Ground Sleeve to suit above Tower.

2 way, 3 Way and 4 Way Towers are also available, please enquire for more details.



Heavy Duty Outdoor Basketball Tower - 2 Way



Often when space is limited or a conventional court layout can't work, a multiple basketball tower provides the ideal solution.

This 2 Way or double design is a robust Heavy Duty Tower well proven at many Council parks around the country.

This system carries an Engineering Design Certificate and features a heavy duty 100 x 100 mm RHS steel post and cross arms which support two International sized backboards complete with their full steel frames and stays.

Each Backboard overhangs the post by 1.2 metres and all steel-work is hot dip galvanised for maximum corrosion protection. The backboards are manufactured from Marine Bonded Plywood which is fully painted and finished with regulation line markings.

The system is supplied with your choice of either Heavy Duty Bolt on Hoops or Removable Security Hoops.

The post can either be permanently concreted into the ground or the optional ground sleeve can be used which means the tower can be removed. In either case a solid and secure footing is required in the ground and we can supply recommendations as to size and depth.

To make the installation easier, the cross arm is supplied as a separate component which is 'bolted' to the post once the post has been set into position.

Ref: 030/016 Heavy Duty 2 Way Outdoor Tower
060/ 041 Ground Sleeve to Suit 2 Way Tower

N.B Outdoor towers are available in Single, 2 Way, Three Way and Four Way Designs. Plus we are able to custom manufacture units.



Heavy Duty Outdoor Basketball Tower - 3 Way

Often when space is limited or a conventional court layout cant work a multiple basketball tower provides the ideal solution.

The standard 3 Way Tower carries an Engineering Design Certificate and features a 150 mm diameter steel post and three backboard support arms arranged around a 'top-hat' central section.

This design allows the main post to be installed and then the backboards lifted into place with the 'top-hat' sitting over the top of the main post. The 'Top-hat' is then bolted through the post.

Each Backboard overhangs the posts by 1.2 metres and all steel work is hot dip galvanised for maximum corrosion protection. The backboards are manufactured from Marine Bonded Plywood which is fully painted and finished with regulation line markings and are to International sizing.

The system is supplied with your choice of either Heavy Duty Bolt-on Hoops or Removable Security Hoops.

The post can either be permanently concreted into the ground or the optional ground sleeve can be used which means the tower can be removed. In either case a solid and secure footing is required in the ground and we can supply recommendations as to size and depth.

Ref: 030/020 Heavy Duty 3 Way Outdoor Tower
 060/042 Ground Sleeve to Suit 3 Way Tower

N.B. Outdoor towers are available in Single, 2 Way, Three Way and Four Way Designs.
Plus we are able to custom manufacture units.



Heavy Duty Outdoor Basketball Tower - 4 Way



Often when space is limited or a conventional court layout cant work a multiple basketball tower provides the ideal solution.

This 4 Way design is a robust Heavy Duty Tower and carrying an Engineering Design Certificate and features a heavy duty RHS steel post and cross arms which supports four International sized backboards complete with their full steel frames and stays.

Each Backboard overhangs the post by 1.2 metres and all steel work is hot dip galvanised for maximum corrosion protection. The backboards are manufactured from Marine Bonded Plywood which is fully painted and finished with regulation line markings.

The system is supplied with your choice of either Heavy Duty Bolt on Hoops or Removable Security Hoops.

The post can either be permanently concreted into the ground or the optional ground sleeve can be used which means the tower can be removed. In either case a solid and secure footing is required in the ground and we can supply recommendations as to size and depth.

Ref: 030/022 Heavy Duty 4 Way Outdoor Tower

060/040 Ground Sleeve to Suit 4 Way Tower

N.B. Outdoor towers are available in Single, 2 Way, Three Way and Four Way Designs. Plus we are able to custom manufacture units.



Heavy Duty Basketball Tower 1.5m Overhang

This outdoor tower is manufactured to our well proven design and has been fully checked by a Registered Engineer and is fabricated so that the backboard projects 1.5 metres from the main support post.

It features a 100 x 100 mm RHS steel post and cross arm gusseted for strength. The backboard is supported by a full steel frame which in turn is braced by stays back to the cross arm.

All steel work is hot dip galvanised for maximum corrosion protection.

The backboard is International size and manufactured from marine bonded ply which is fully painted and finished with regulation line markings.

The system is supplied with a 'Goliath' Hoop (030/015)
An optional ground socket (060/041) is available if required.

Ref: 030/064 Heavy Duty Outdoor Basketball Tower 1.5m Overhang



Heavy Duty Basketball Tower - 2.4m Overhang

Taking its basic design from our standard Heavy Duty Tower, this model achieves an even greater overhang with increased post and cross arm sizes.

Once again the design has been fully checked by a Registered Engineer and is backed by an Engineering Design Certificate.

All steelwork is hot dip galvanised for maximum corrosion protection and the tower is supplied with an International sized marine bonded ply backboard and a bolt on Extra Heavy Duty Goliath Hoop or option of removable.

This tower is designed to be permanently concreted into the ground.

Ref: 030/053

Heavy Duty Outdoor Basketball Tower 2.4m Overhang



Outdoor Gooseneck Basketball Tower 1.5m Overhang

This design of heavy duty tower features a 115 mm diameter post rolled to a gooseneck shape which then supports the backboard on its full steel frame and the design is fully Engineer checked.

The backboard face to the post overhang is 1.5 metres and stays are included to brace the backboard back to the top of the post. All steel work is hot dipped galvanised.

The backboard is International size Marine Bonded Ply which is fully painted and finished with regulation line marking. A Goliath Heavy Duty Hoop is included.

Use with ground socket 060/046 if required.

Ref: 030/065 Outdoor Gooseneck Tower 1.5m Overhang



Outdoor Gooseneck Basketball Tower 2.4m Overhang

Whilst similar to other towers in our range, this model has been designed with the assistance of a Registered Engineer and used a 140 mm diameter post which is rolled to achieve the post to backboard overhang of 2.4 metres.

As with other models, this unit features a full steel backboard frame plus stays and all steelwork is hot dip galvanised.

The backboard is International size and manufactured from marine bonded ply which is fully painted and line marked to regulation dimensions.

If required, an optional ground socket is available (code 060/047) although concreting directly into the ground is preferred.

Ref: 030/066 Outdoor Gooseneck Tower 2.4m Overhang



Gymleader Reversible Basketball / Netball Tower

Heavy duty 100NB Hot Dipped Galvanised round pipe Basketball Tower

This unit is regulation height and features a 1.2 metre overhang with International size marine bonded ply backboard on a full steel frame and complete with a Heavy Duty Goliath Hoop.

A heavy duty Netball ring is fitted to the back of the post.

Come complete with special ground socket which allows post to be reversed for Basketball or Netball.

Ref: 030/071

Reversible Tower



Outdoor Side Folding Basketball Backstops - Galvanised

A custom designed outdoor unit which sees the backboard attached to support arms which in turn are attached to posts set into the ground. Typically, the posts may be on the fenceline of an outdoor court.

The backboard projects into the court but then when the court is needed for other sports, it can be simply swung sideways and locked out of the way.

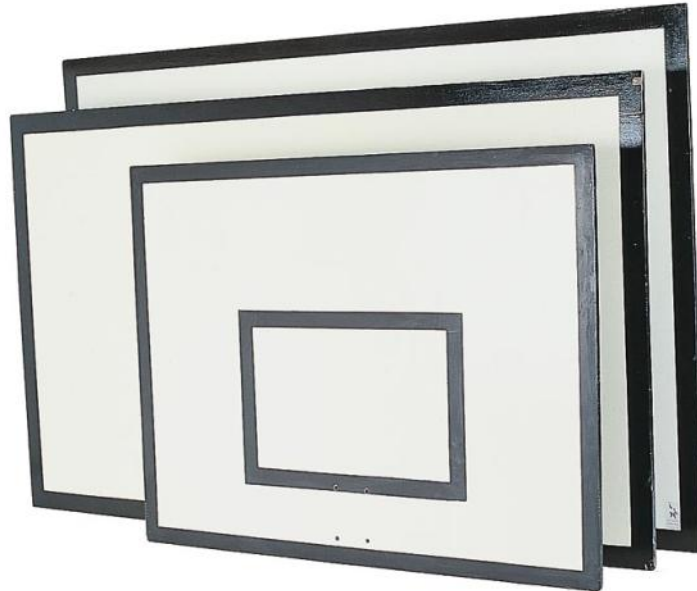
All steel work is hot dip galvanised for maximum corrosion protection and the unit is fitted with an International size Marine Bonded Ply Backboard and supplied with a Goliath bolt on hoop.

Each unit is custom designed and manufactured to suit each application so please contact us for further details and pricing.

030/082 Outdoor Galvanised Side Folding Basketball Units



Timber Basketball Backboards



All Gymleader and Sportmat standard Basketball backboards are manufactured from 18mm marine bonded plywood, and boards are fully painted and line marked.

For systems where there is no steel support behind the hoop area, we can supply reinforcement as an additional item - please enquire.

Clear polycarbonate backboards are available to order - please enquire.

- | | |
|---------|---|
| 030/007 | International Size 1800 x 1050 mm
Marine bonded ply. |
| 030/008 | Old Regulation Size 1830 x 1220 mm (Nom)
Marine bonded ply. N.B: made to order - please confirm exact size |
| 030/009 | Junior Size 1200 x 900 mm (Nom)
Marine bonded ply. |
| 030/050 | Primary Size 1200 x 800 mm
Marine bonded ply |



Heavy Duty Basketball Hoop



Removable Security Slide out Kit

All Gymleader Basketball Hoops are manufactured from solid steel and are very robust. The design is well proven right throughout the country at Schools and Recreation Centres.

Two models are available, either standard Heavy Duty where the ring is made from 16 mm diameter steel, or the Goliath Hoop where 20 mm diameter steel is used for the ring.

Both hoops are finished in Orange powder coat as standard although galvanised finish is available to special order.

The rigid design type means that the hoop is rigidly bolted to the backboard. An optional extra, a slide out kit can be used which allows the hoop to be removed to prevent theft or unauthorised play.

The heavy duty hoop is made with a 50 mm x 75 mm hole mounting pattern.

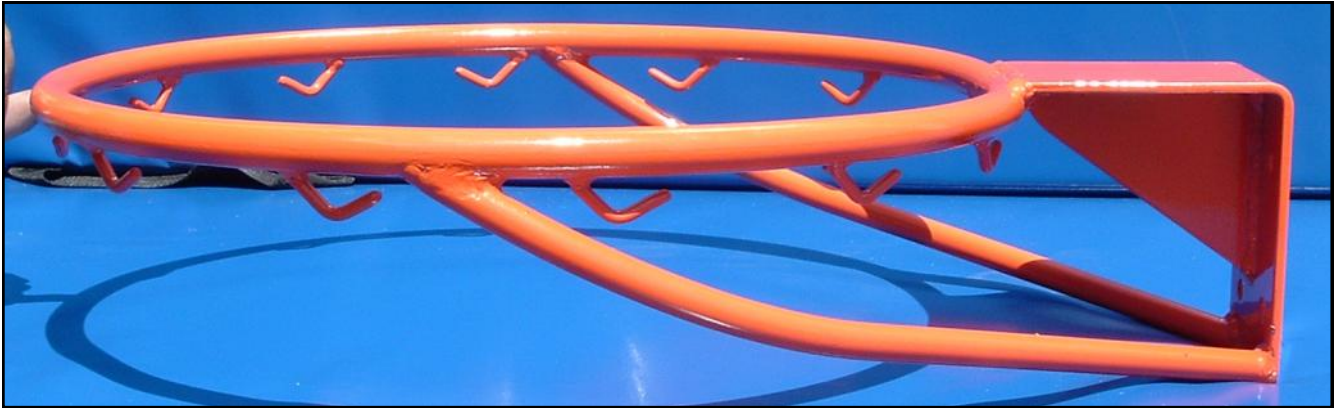
Ref: 030/012 Heavy Duty Hoop - Powder Coated (pictured)
 030/057 Heavy Duty Hoop - Galvanised

 030/024 Fixing Kit - Rigid Mounting
 030/026 Fixing Kit - Removable Hoop

N.B Competition grade Sprung Hoops are also available.



Goliath Heavy Duty Basketball Hoop



All Gymleader Basketball Hoops are manufactured from solid steel and are very robust. The design is well proven right throughout the country at Schools and Recreation Centres.

Two models are available, either standard Heavy Duty where the ring is made from 16 mm diameter steel, or the Goliath Hoop where 20 mm diameter steel is used for the ring.

Both hoops are finished in Orange powder coat as standard although galvanised finish is available to special order.

The rigid design type means that the hoop is rigidly bolted to the backboard. The Goliath Hoop has a larger back plate which is supplied drilled with a fixing pattern of 50 x 75 mm.

Fixings and net are not included.

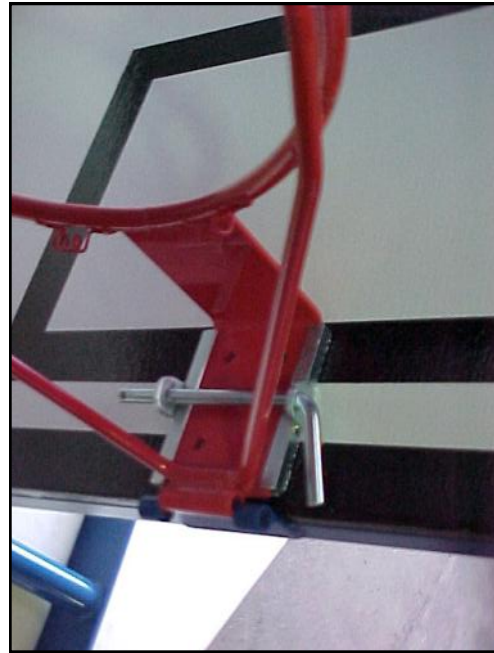
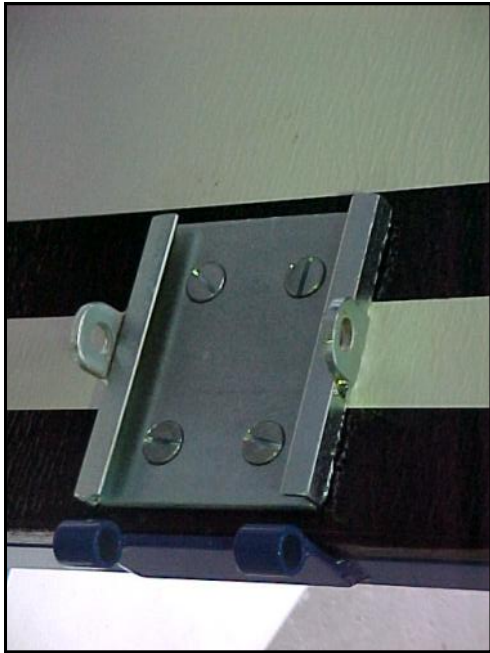
Ref: 030/015 Goliath - Super Heavy Duty Hoop - Powder Coated
 030/056 Goliath - Super Heavy Duty Hoop - Galvanised

 030/024 Fixing Kit - Rigid Mounting
 030/026 Fixing Kit - Removable Hoop

N.B Competition grade Sprung Hoops are also available.



Security Hoop Fixing Kit



- Attach slide plate to backboard with 4 x countersunk machine screws & washers & nuts.
- Plate should be positioned centrally on board & so top of hoop is level with goal square line as shown.
- Slide hoop into plate for play.
- Use pin with a padlock (not supplied) to prevent unauthorised removal of hoop.

030/026

Security / Removable Hoop Kit



Check out our website for our full range of equipment to suit Preschools, Primary to High Schools, Clubs and Recreation Facilities.

www.gymleader.co.nz

Gymleader New Zealand Limited

Postal Address

PO Box 22 314

Otahuhu

Auckland

Physical Address

40 Saleyards Road

Otahuhu

Auckland

Free Phone: 0800 496 532

Phone: 09 276 6504

Fax: 09 276 1284

Email: info@gymleader.co.nz

GYM Leader

ahead of the game in sports equipment

Copyright

All brand names, designs and details used in this file and any other Gymleader New Zealand Limited material are the property of Gymleader New Zealand Limited and as such are protected by copyright.

No part of this book or any other Gymleader New Zealand Limited information can be reproduced in any form whatsoever without the prior express written approval of Gymleader New Zealand Limited.